



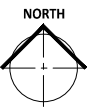
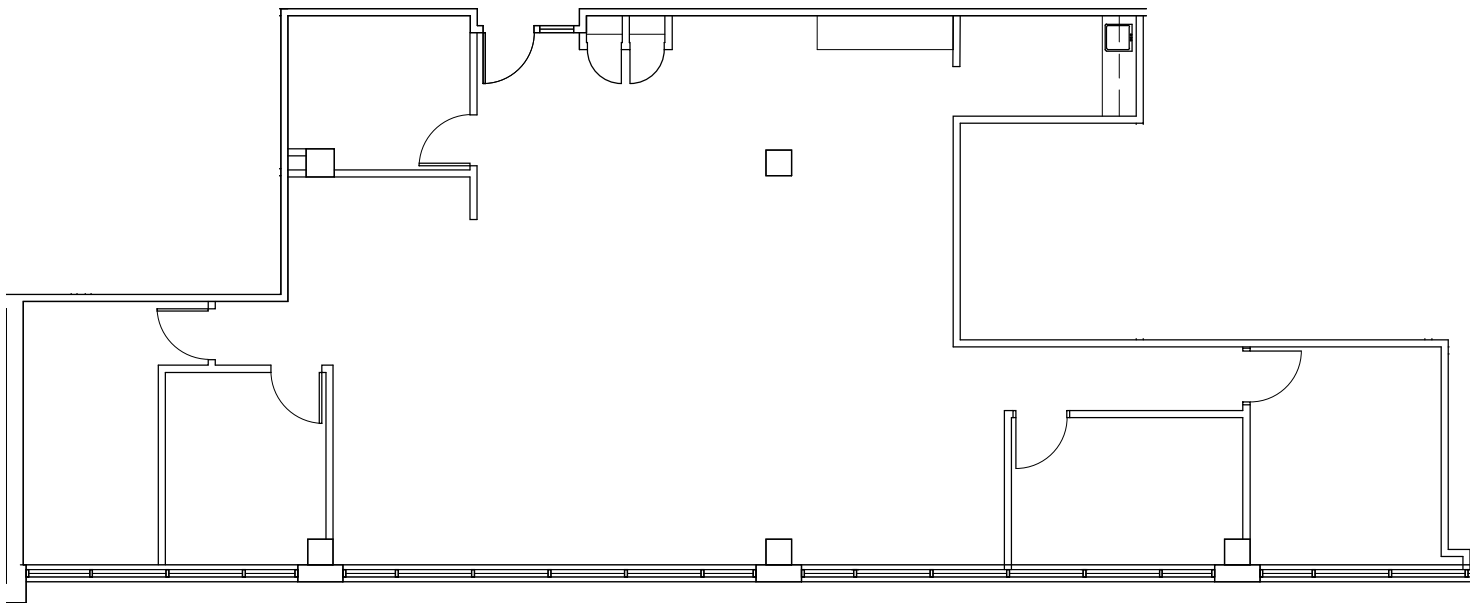
PARK PLACE
EAST & WEST

PARK PLACE WEST

6465 WAYZATA BLVD.

ST. LOUIS PARK, MN

SUITE 650 - 2,274 square feet



LEASED BY:

CBRE

CB RICHARD ELLIS

BRIAN WASSERMAN (952) 924-4681

JIM FREYTAG (952) 924-4616

OWNED & MANAGED BY:

GOLUB & COMPANY



AEW

