



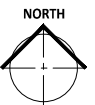
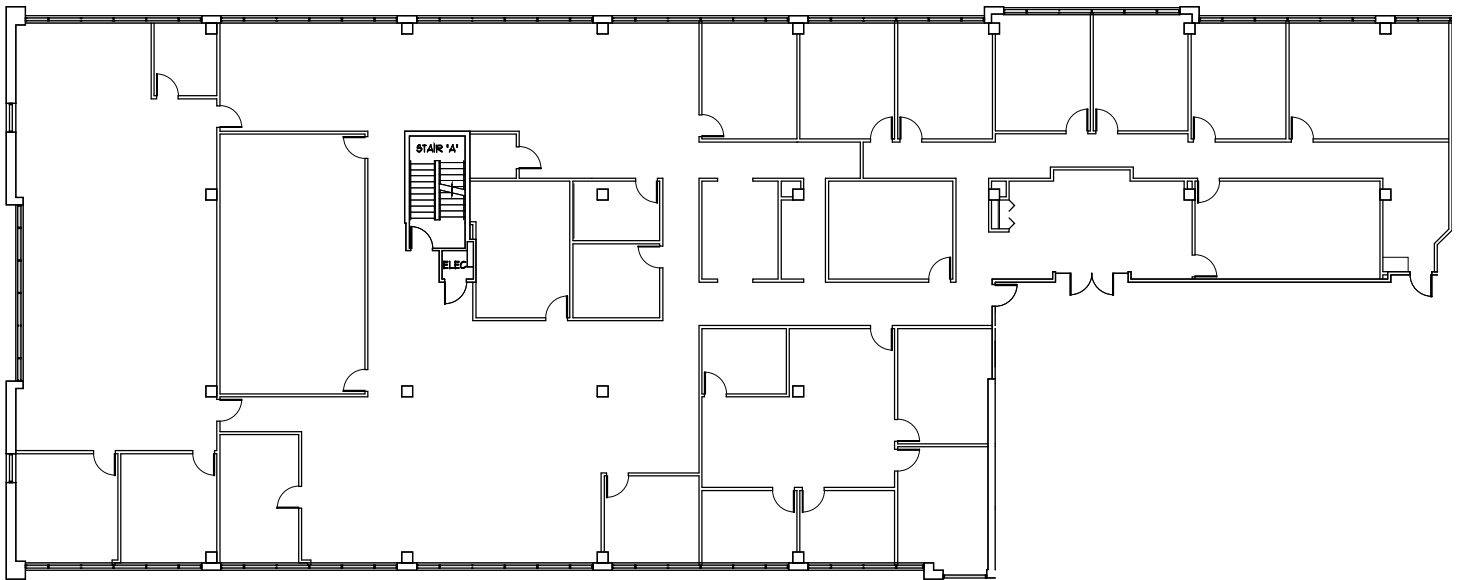
PARK PLACE  
EAST & WEST

# PARK PLACE WEST

6465 WAYZATA BLVD.

ST. LOUIS PARK, MN

**SUITE 600 - 13,339 square feet**



LEASED BY:

**CBRE**

CB RICHARD ELLIS

BRIAN WASSERMAN (952) 924-4681

JIM FREYTAG (952) 924-4616

OWNED & MANAGED BY:

GOLUB & COMPANY



**AEW**

