

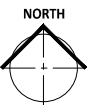
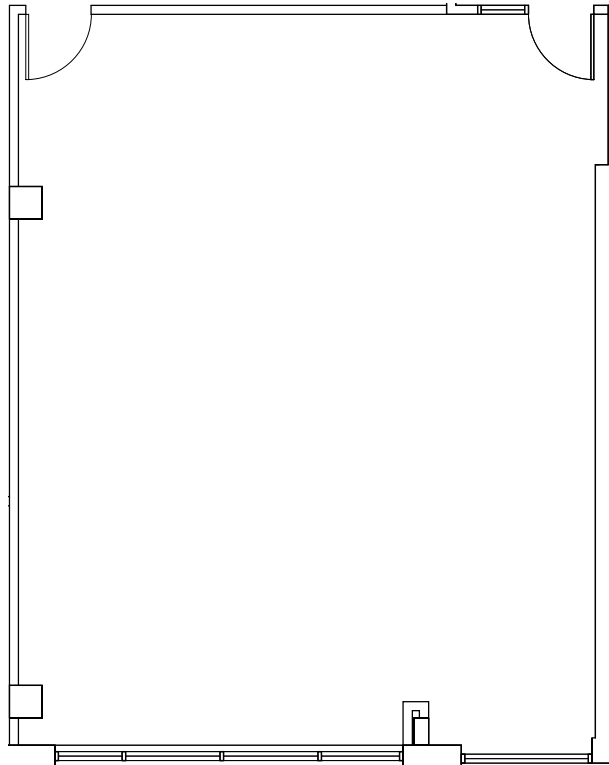


PARK PLACE  
EAST & WEST

# PARK PLACE WEST

6465 WAYZATA BLVD.  
ST. LOUIS PARK, MN

## SUITE 250 - 1,049 square feet



LEASED BY:

**CBRE**

CB RICHARD ELLIS

BRIAN WASSERMAN (952) 924-4681

JIM FREYTAG (952) 924-4616

OWNED & MANAGED BY:

GOLUB & COMPANY



**AEW**

