

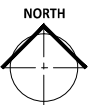
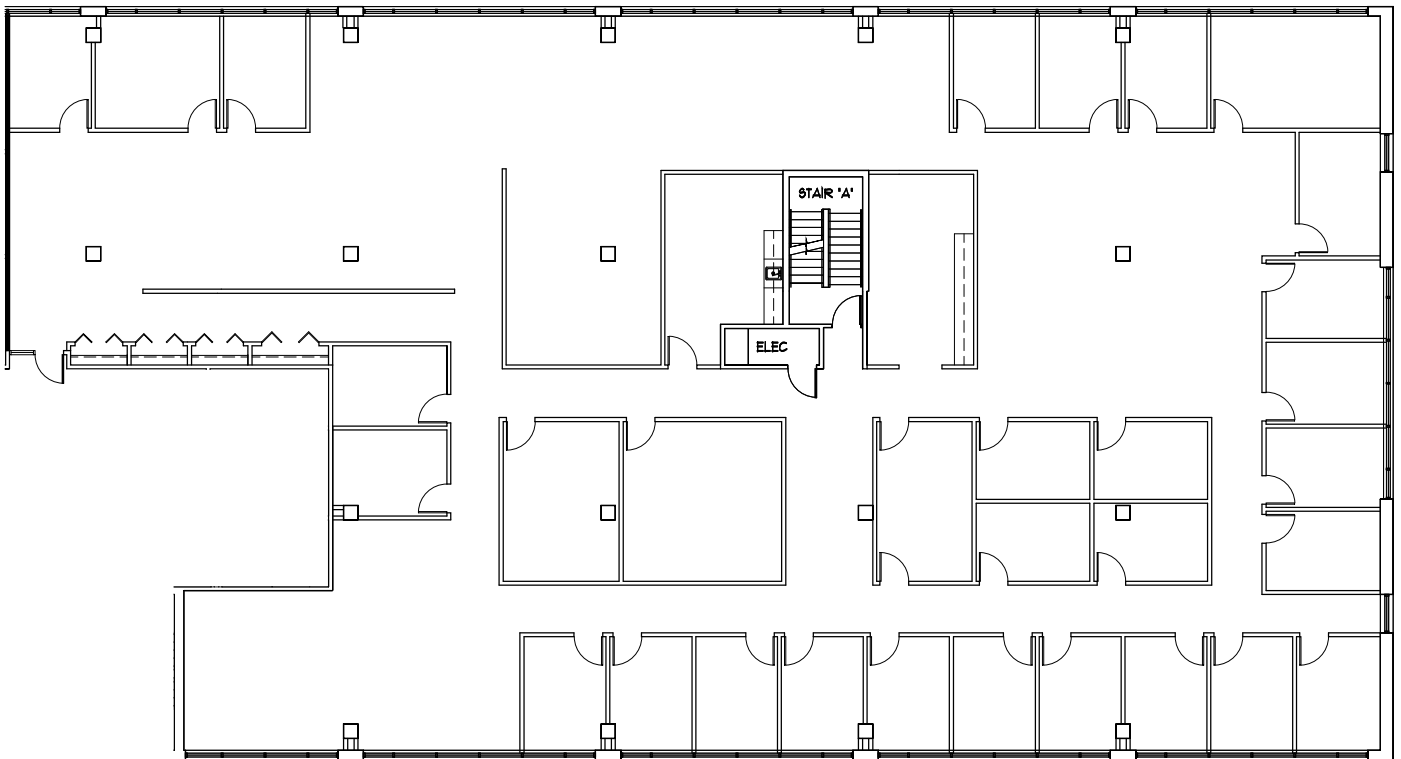


PARK PLACE  
EAST & WEST

# PARK PLACE WEST

6465 WAYZATA BLVD.  
ST. LOUIS PARK, MN

SUITE 210 - 10,878 square feet



LEASED BY:

**CBRE**  
CB RICHARD ELLIS

BRIAN WASSERMAN (952) 924-4681  
JIM FREYTAG (952) 924-4616

OWNED & MANAGED BY:

GOLUB & COMPANY



**AEW**

