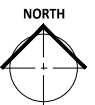
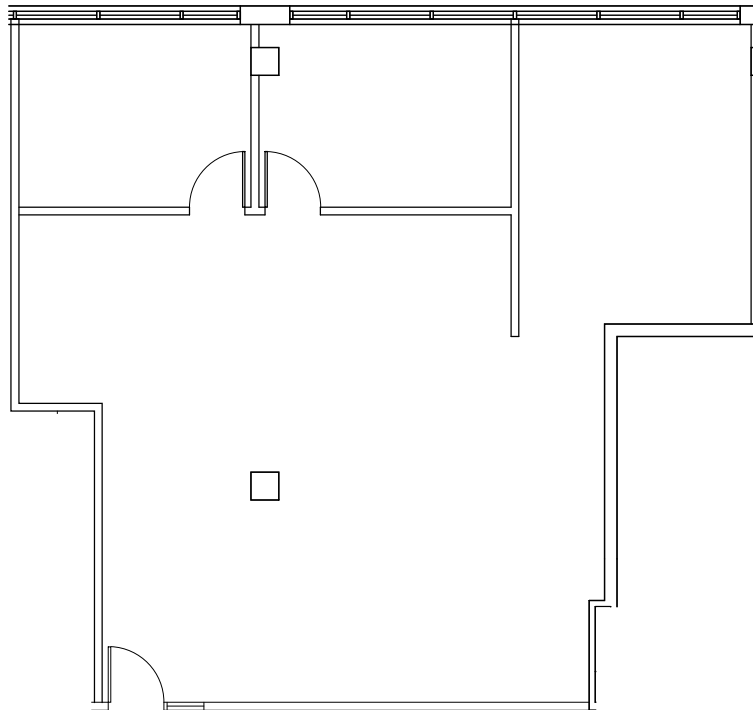




PARK PLACE  
EAST & WEST

**PARK PLACE EAST**  
5775 WAYZATA BLVD.  
ST. LOUIS PARK, MN

**SUITE 970 - 1,463 square feet**



LEASED BY:

**CBRE**  
CB RICHARD ELLIS

BRIAN WASSERMAN (952) 924-4681  
JIM FREYTAG (952) 924-4616

OWNED & MANAGED BY:

GOLUB & COMPANY



**AEW**

