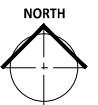
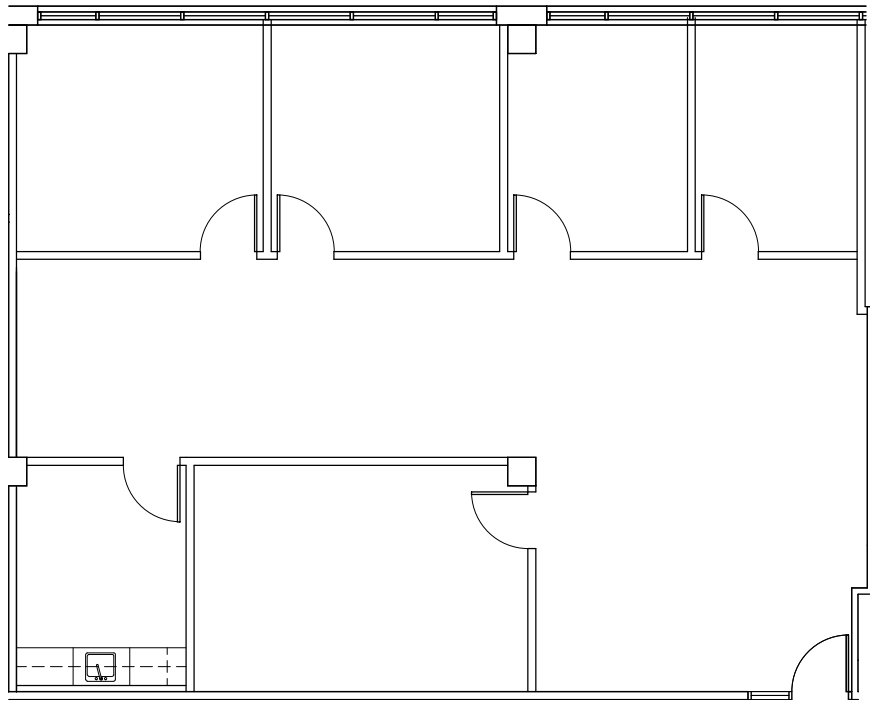




PARK PLACE
EAST & WEST

PARK PLACE EAST
5775 WAYZATA BLVD.
ST. LOUIS PARK, MN

SUITE 660 - 1,825 square feet



LEASED BY:

CBRE
CB RICHARD ELLIS

BRIAN WASSERMAN (952) 924-4681
JIM FREYTAG (952) 924-4616

OWNED & MANAGED BY:

GOLUB & COMPANY



AEW

